

LOUVERS

Standard Series Louvers

NOTE: All louvers are sold individually.



Note: All round louvers require 2.5" hole unless otherwise noted.



49054-VUL

Under dash for 2.5" hose.

49354-VUL

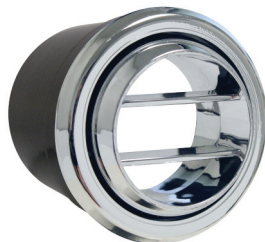
Under dash (All black).

49154-VUL

Under dash (All chrome).

49051-VUI

Under dash louver pod only, 2.5" punched holes for louvers with up to 2.875" diameter.



490535 Double vane louver, chrome. 2.70" bezel diameter. For 2.5" hose.



499195 SlimLine adjustable double vane louver. Thru-dash mount. 3" bezel diameter. Note: Louvers open, close & rotate 360°

Note: Requires 2.625" hole size.



499194 Adjustable Double Vane Louver. Chrome bezel thru-dash mount. 2.70" diameter.

499193 Adjustable Double Vane Louver. Black thru-dash mount. 2.70" bezel diameter. Note: Louvers open, close & rotate 360°

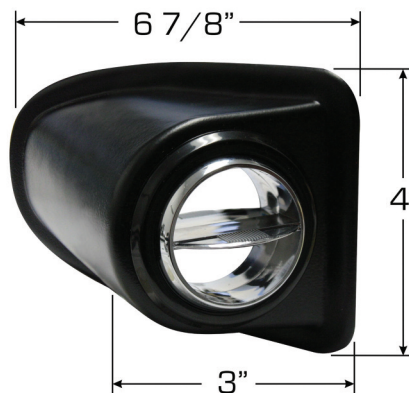


49053-VUL Thru-dash mount. 2.70" bezel diameter. For 2.5" hose.

49353-VUL Thru-dash mount (All black).

49153-VUL Thru-dash mount (All chrome).

49049-VUL Thru-dash mount. For 3" hose.



490500 Through kick panel louver pod. Louver mounts through the back side of kick panel. Includes 49053-VUL louver and installation template (Sold individually).



49040-VUL

'40 Ford ashtray louvers. Replaces stock ashtrays. Pair, for 2.5" duct hose.



For illustration only. '40 dash not included.



Professional Quality Roto Broach Hole Saw

421002 The right way to cut louver mounting holes in metals, plastics, or wood trim. Includes pilot and arbor. 2.5" diameter, 3/8" drill shank size.

CUSTOMER SERVICE TEAM

Pictured here are five of our newest sales team members. Like most all of the Vintage Air crew, they are long-time car guys and are ready to help you choose the right system for your project. (Back Row L-R) Javier Martinez, Aaron Russell & Ken Edelstein. (Front Row L-R) Jason Martinez & Andy Draper.

